

Focus Building, 17 Standish Street, Liverpool, Merseyside L3 2BD

£1,075 PCM

Nestled in the vibrant area of Standish Street, Liverpool, this charming two-bedroom duplex apartment offers a perfect blend of modern living and comfort. The property features a spacious reception room, ideal for both relaxation and entertaining guests. With two well-appointed bedrooms, this apartment is perfect for small families, couples, or professionals seeking a stylish urban retreat.

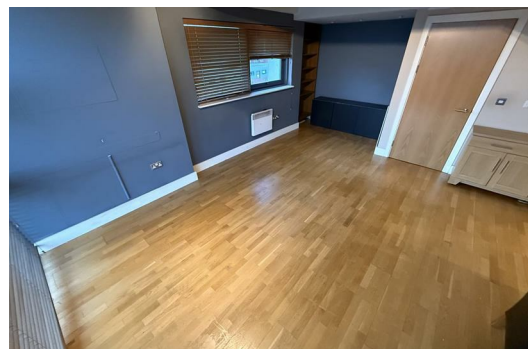
The apartment boasts two bathrooms, ensuring convenience and privacy for all residents. The furnishings are contemporary and tasteful, providing a welcoming atmosphere from the moment you step inside. This property is available for immediate occupancy, making it an excellent choice for those looking to move in without delay.

Additionally, the apartment includes parking for one vehicle, a valuable feature in this bustling city.

Deposit: £1,075.00

Council Tax:

Minimum Term: 12months



Lounge
Open plan lounge and dining.

Kitchen
Fully equipped kitchen

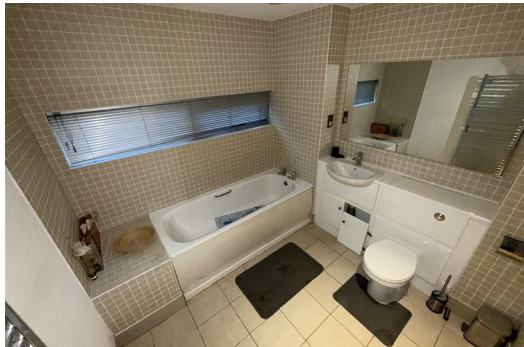
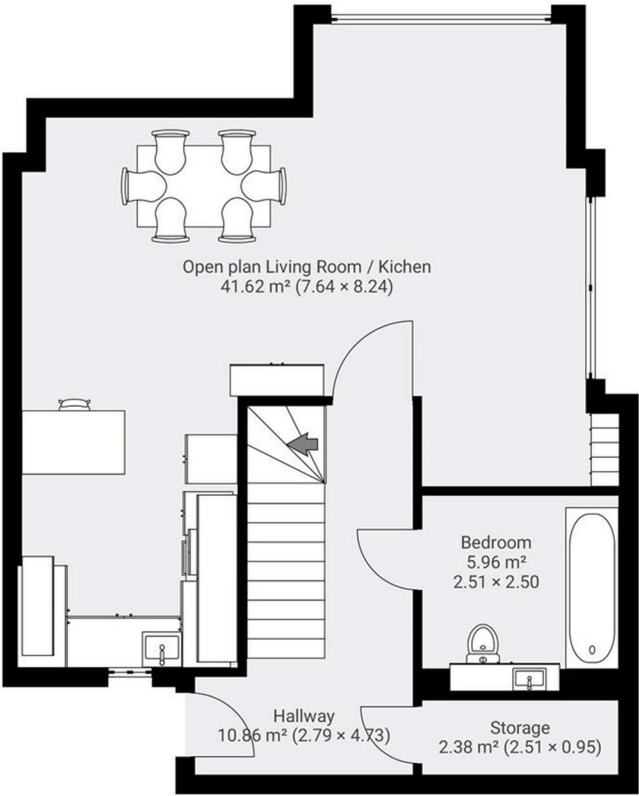
Bathroom
Fully fitted bathroom with shower over back

Bedroom One w/ ensuite
Large double bedroom with ensuite

Bedroom Two
Large double bedroom with overlook to lounge

Energy Efficiency Rating		
	Current	Potential
Very energy efficient - lower running costs		
(92 plus) A		82
(81-91) B		
(69-80) C		
(55-68) D	68	
(39-54) E		
(21-38) F		
(1-20) G		
Not energy efficient - higher running costs		
England & Wales		EU Directive 2002/91/EC

Environmental Impact (CO ₂) Rating		
	Current	Potential
Very environmentally friendly - lower CO ₂ emissions		
(92 plus) A		
(81-91) B		
(69-80) C		
(55-68) D		
(39-54) E		
(21-38) F		
(1-20) G		
Not environmentally friendly - higher CO ₂ emissions		
England & Wales		EU Directive 2002/91/EC



Berkeley Shaw Estate Agents Limited.
Company No. 0784754

Berkeley Shaw Real Estate Limited.
Company No. 05206927

